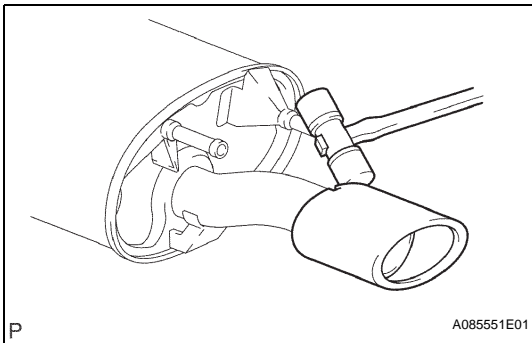


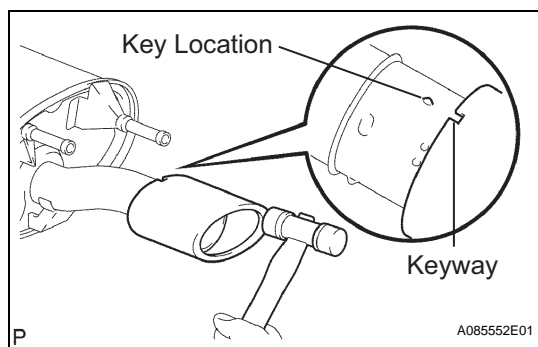
## REMOVAL

### NOTICE:

Check if an old gasket still remains on the pipe. If so, remove it. Also, check if any bolts or nuts are rested. If so, replace them.

1. **REMOVE FLOOR PANEL BRACE REAR**
  - (a) Remove the 2 bolts and floor panel brace rear.
2. **REMOVE EXHAUST PIPE DAMPER (A/T)**
  - (a) Remove the 2 bolts and exhaust pipe damper.
3. **REMOVE CENTER EXHAUST PIPE ASSEMBLY**
  - (a) Remove the 2 bolts, 2 nuts and center exhaust pipe assembly from the front exhaust pipe assembly.
  - (b) Remove the 2 nuts and center exhaust pipe assembly from the tail exhaust pipe assembly.
  - (c) Remove the center exhaust pipe assembly from the 2 exhaust pipe supports.
4. **REMOVE HEATED OXYGEN SENSOR**
  - (a) Disconnect the heated oxygen sensor (bank 1 sensor 2) connector.
  - (b) Remove the heated oxygen sensor (bank 1 sensor 2).
5. **REMOVE FRONT EXHAUST PIPE NO. 1 SUPPORT BRACKET**
  - (a) Remove the 2 nuts and front exhaust pipe No.1 support bracket.
6. **REMOVE REAR EXHAUST PIPE NO. 1 SUPPORT BRACKET**
  - (a) Remove the 2 bolts and rear exhaust pipe No.1 support bracket.
7. **REMOVE FRONT EXHAUST PIPE ASSEMBLY**
  - (a) Remove the 2 nuts and front exhaust pipe assembly.
8. **REMOVE TAIL EXHAUST PIPE ASSEMBLY**
  - (a) Remove the tail exhaust pipe assembly from the 3 exhaust pipe supports.
9. **REMOVE TAIL PIPE BAFFLE**
  - (a) Using a plastic hammer, tap the baffle uniformly to remove it.

**EX**



## INSTALLATION

### 1. INSTALL TAIL PIPE BAFFLE

- Align the keyway of the baffle with the key location on the tail pipe.
- Using a plastic hammer, tap the baffle to install it.

### 2. INSTALL TAIL EXHAUST PIPE ASSEMBLY

- Install the tail exhaust pipe assembly with the 3 exhaust pipe supports.

### 3. INSTALL FRONT EXHAUST PIPE ASSEMBLY

- Install a new gasket and the front exhaust pipe assembly to the exhaust manifold converter with the 2 nuts.

**Torque: 62 N\*m (632 kgf\*cm, 46 ft.\*lbf)**

### 4. INSTALL REAR EXHAUST PIPE NO. 1 SUPPORT BRACKET

- Install the rear exhaust pipe No.1 support bracket with the 2 bolts.

**Torque: 33 N\*m (337 kgf\*cm, 24 ft.\*lbf)**

**NOTICE:**

**Do not install the bracket facing the wrong direction.**

### 5. INSTALL FRONT EXHAUST PIPE NO. 1 SUPPORT BRACKET

- Install the front exhaust pipe No.1 support bracket with the 2 nuts.

**Torque: 33 N\*m (337 kgf\*cm, 24 ft.\*lbf)**

### 6. INSTALL HEATED OXYGEN SENSOR

- Install the heated oxygen sensor (bank 1 sensor 2) to the front exhaust pipe assembly.

**Torque: 44 N\*m (449 kgf\*cm, 32 ft.\*lbf)**

- Connect the heated oxygen sensor (bank 1 sensor 2) connector.

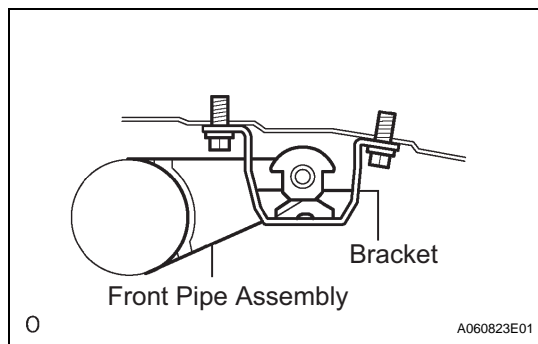
### 7. INSTALL CENTER EXHAUST PIPE ASSEMBLY

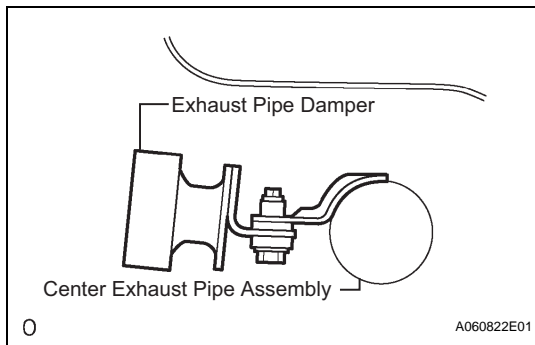
- Install a new gasket and the center exhaust pipe assembly to the front exhaust pipe assembly with the 2 bolts and 2 nuts.

**Torque: 56 N\*m (571 kgf\*cm, 41 ft.\*lbf)**

- Install a new gasket and the center exhaust pipe assembly to the tail exhaust pipe assembly with the 2 nuts.

**Torque: 56 N\*m (571 kgf\*cm, 41 ft.\*lbf)**



**8. INSTALL EXHAUST PIPE DAMPER (A/T)**

- (a) Install the exhaust pipe damper with the 2 bolts.

**Torque: 19 N\*m (194 kgf\*cm, 14 ft.\*lbf)**

**NOTICE:**

**Do not install the damper facing the wrong direction.**

**9. INSTALL FLOOR PANEL BRACE REAR**

- (a) Install the floor panel brace rear with the 2 bolts.

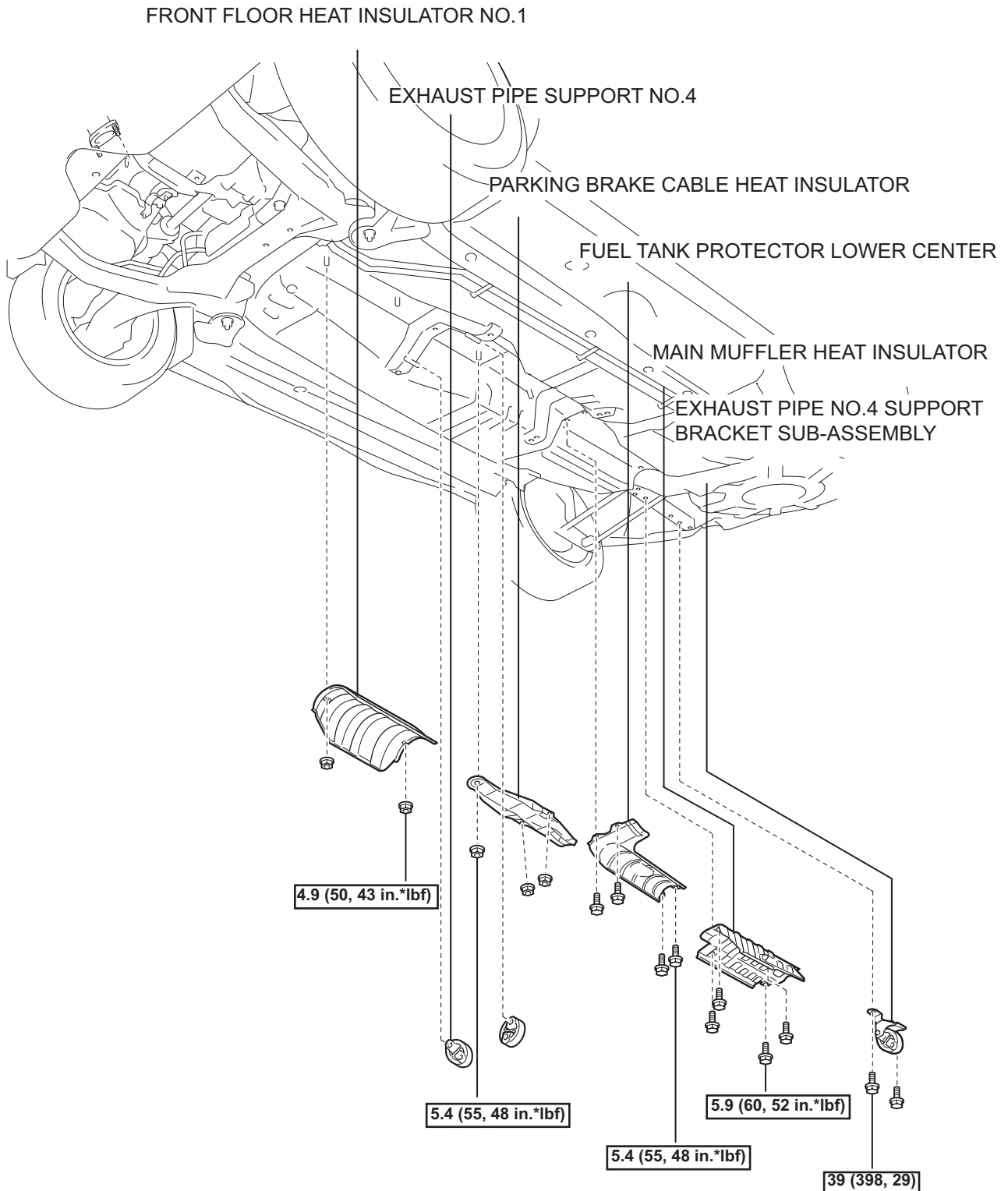
**Torque: 19.5 N\*m (199 kgf\*cm, 14 ft.\*lbf)**

**10. CHECK FOR EXHAUST GAS LEAKS**

- (a) If gas is leaking, tighten the areas necessary to stop the leak. Replace damaged parts as necessary.

# EXHAUST PIPE

## COMPONENTS



EX

**[N\*m (kgf\*cm, ft.\*lbf)]**: Specified torque

● Non-reusable part

P

A109028E01

## REAR EXHAUST PIPE NO. 1 SUPPORT BRACKET

