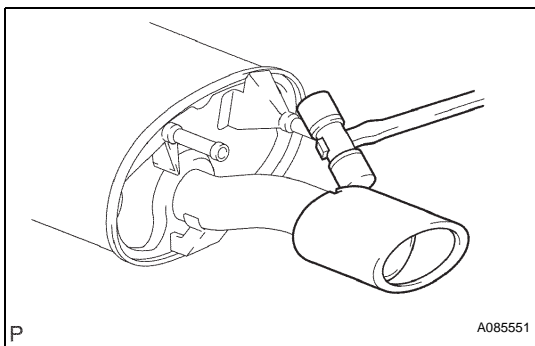


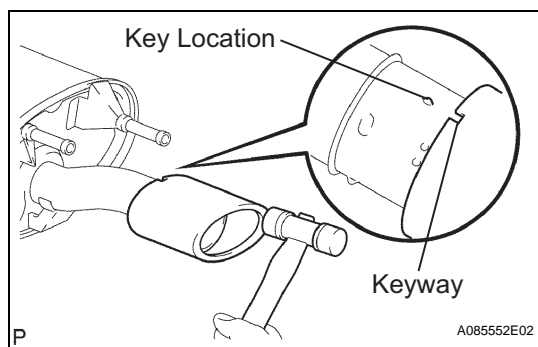
REMOVAL

NOTICE:

Check if an old gasket still remains on the pipe. If so, remove it. Also, check if any bolts or nuts are rusted. If so, replace them.

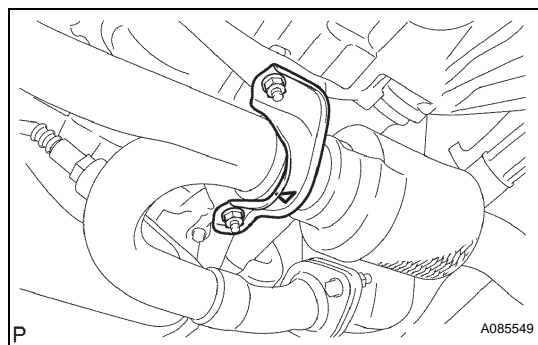
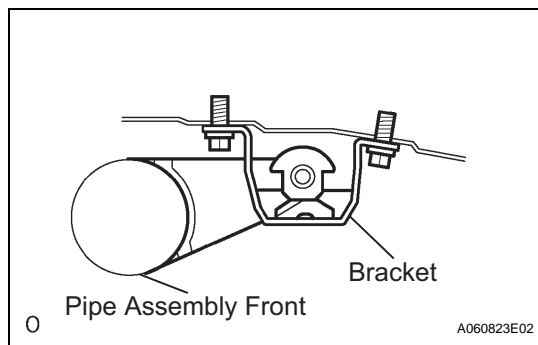
1. **REMOVE HEATED OXYGEN SENSOR**
 - (a) Disconnect the 2 heated oxygen sensor (bank 1, 2 sensor 2) connectors.
 - (b) Remove the 2 heated oxygen sensors (bank 1, 2 sensor 2).
2. **REMOVE FRONT EXHAUST PIPE NO. 1 SUPPORT BRACKET**
 - (a) Remove the 2 nuts and front support bracket.
3. **REMOVE FLOOR PANEL BRACE REAR**
 - (a) Remove the 2 bolts and brace.
4. **REMOVE REAR EXHAUST PIPE NO. 1 SUPPORT BRACKET**
 - (a) Remove the 2 bolts and rear support bracket.
5. **REMOVE FRONT EXHAUST PIPE ASSEMBLY**
 - (a) Remove the 2 nuts holding the exhaust manifold converter No. 2 to the pipe front.
 - (b) Remove the 2 bolts holding the exhaust manifold converter RH to the pipe front.
 - (c) Remove the 2 bolts and 2 nuts holding the exhaust pipe center to the pipe front. Then remove the pipe front.
6. **REMOVE CENTER EXHAUST PIPE ASSEMBLY**
 - (a) Remove the 2 nuts from the pipe tail.
 - (b) Remove the pipe center from the 2 exhaust pipe supports.
 - (c) Remove the gasket between the pipe center and pipe tail.
7. **REMOVE TAIL EXHAUST PIPE ASSEMBLY**
 - (a) Remove the pipe tail from the 3 exhaust pipe supports.
8. **REMOVE TAIL PIPE BAFFLE**
 - (a) Using a plastic hammer, tap the baffle uniformly to remove it.

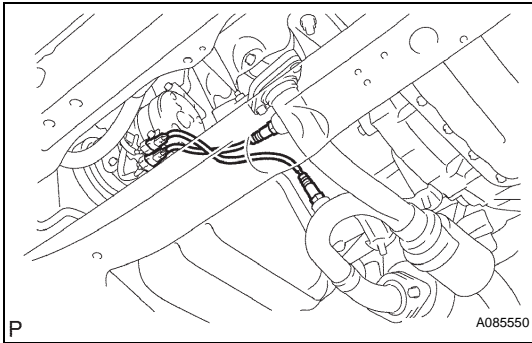




INSTALLATION

1. **INSTALL TAIL PIPE BAFFLE**
 - (a) Align the keyway of the baffle with the key location on the pipe assembly tail.
 - (b) Using a plastic hammer, tap the baffle to install it.
2. **INSTALL TAIL EXHAUST PIPE ASSEMBLY**
 - (a) Install the pipe tail with the 3 exhaust pipe supports.
3. **INSTALL CENTER EXHAUST PIPE ASSEMBLY**
 - (a) Install a new gasket between the pipe center and pipe tail.
 - (b) Install the exhaust pipe center to the 2 exhaust pipe supports.
 - (c) Install the pipe center with the 2 nuts.
Torque: 56 N*m (571 kgf*cm, 41 ft.*lbf)
4. **INSTALL FRONT EXHAUST PIPE ASSEMBLY**
 - (a) Install the 3 new gaskets to the pipe front.
 - (b) Install the pipe front to the exhaust manifold converter RH with the 2 bolts.
Torque: 62 N*m (632 kgf*cm, 46 ft.*lbf)
 - (c) Install the pipe front to the exhaust manifold converter No. 2 with the 2 nuts.
Torque: 62 N*m (632 kgf*cm, 46 ft.*lbf)
 - (d) Install the pipe front to the pipe center with the 2 bolts and 2 nuts.
Torque: 56 N*m (571 kgf*cm, 41 ft.*lbf)
5. **INSTALL REAR EXHAUST PIPE NO. 1 SUPPORT BRACKET**
 - (a) Install the rear support bracket with the 2 bolts.
Torque: 33 N*m (337 kgf*cm, 24 ft.*lbf)
NOTICE:
Do not install the bracket facing the wrong direction.
6. **INSTALL FLOOR PANEL BRACE REAR**
 - (a) Install the floor panel brace with the 2 bolts.
Torque: 19.5 N*m (199 kgf*cm, 14 ft.*lbf)
7. **INSTALL FRONT EXHAUST PIPE NO. 1 SUPPORT BRACKET**
 - (a) Install the front support bracket with the 2 nuts.
Torque: 33 N*m (337 kgf*cm, 24 ft.*lbf)
NOTICE:
Do not install the support bracket facing the wrong direction.



**8. INSTALL HEATED OXYGEN SENSOR**

- (a) Install the 2 heated oxygen sensors (bank 1, 2 sensor 2).

Torque: 44 N*m (449 kgf*cm, 32 ft.*lbf)

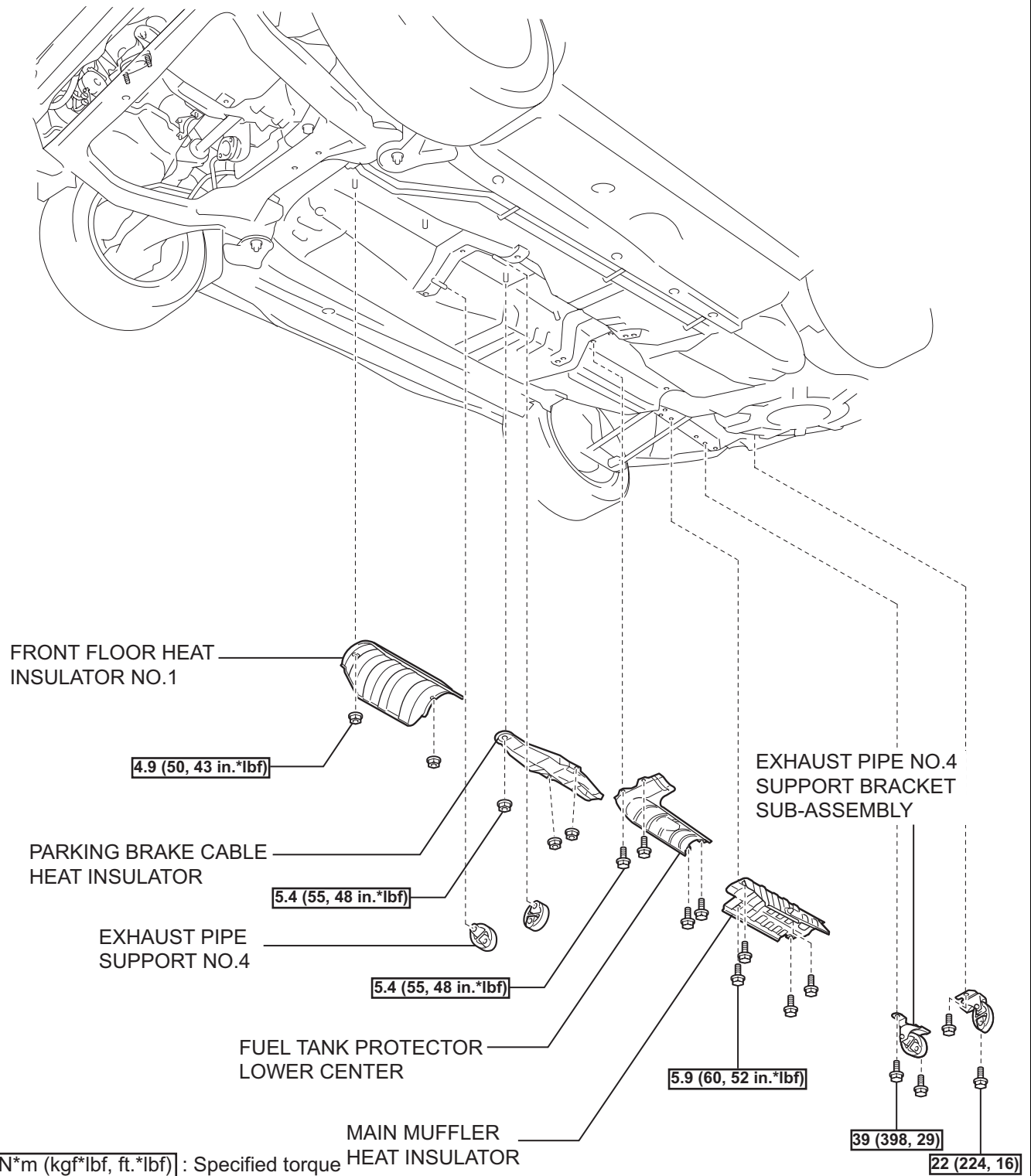
- (b) Connect the 2 heated oxygen sensor (bank 1, 2 sensor 2) connectors.

9. CHECK FOR EXHAUST GAS LEAKS

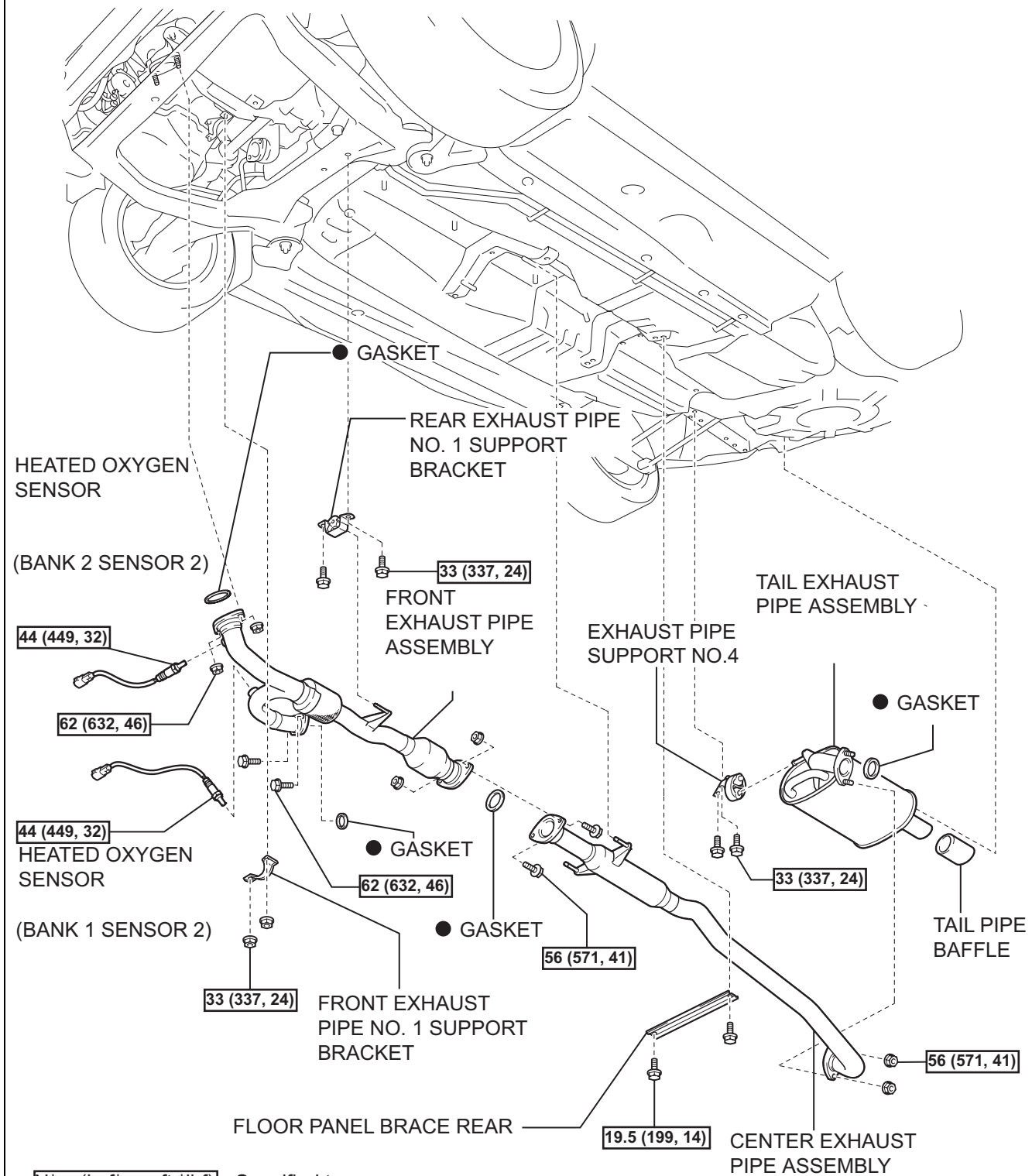
If gas is leaking, tighten the areas necessary to stop the leak. Replace damaged parts as necessary.

EXHAUST PIPE

COMPONENTS



EX



N*m (kgf*cm, ft.*lbf) : Specified torque

● Non-reusable part